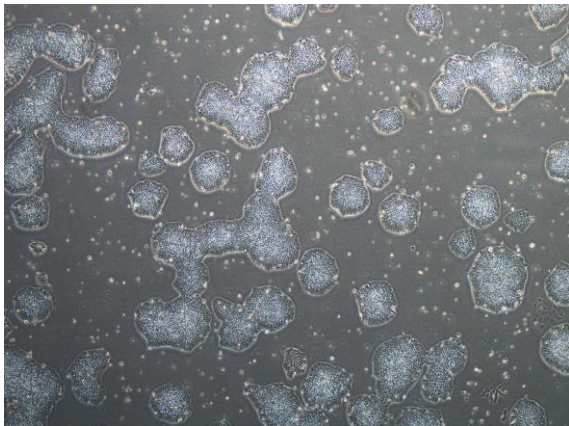
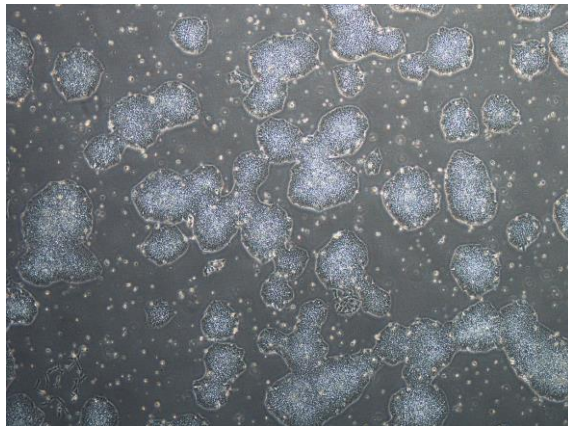


【 CiRA-j-1500 】 Morphology of iPSC colonies

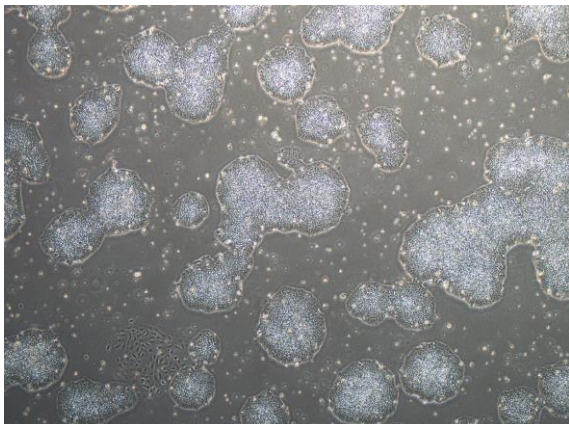
CiRA-j-1500-A: passage-3



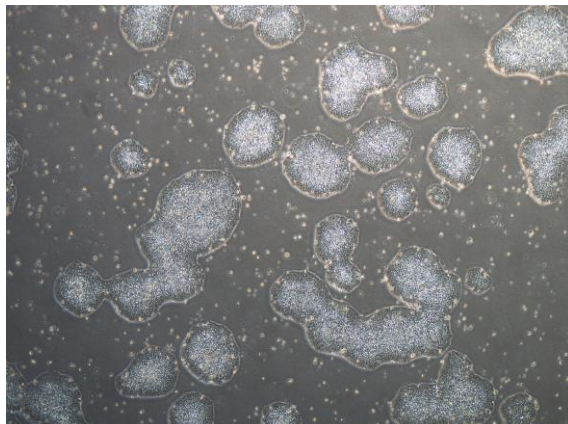
CiRA-j-1500-B: passage-3



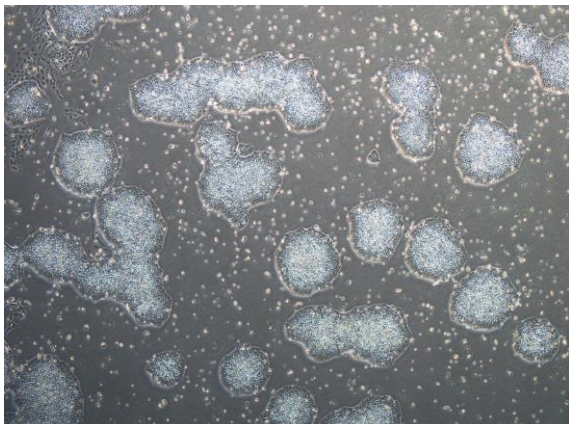
CiRA-j-1500-C: passage-3



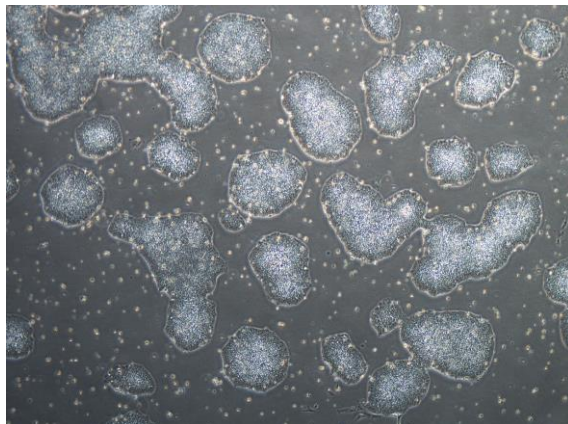
CiRA-j-1500-D: passage-3



CiRA-j-1500-E: passage-3



CiRA-j-1500-F: passage-3



(All images were captured at 4x magnification)